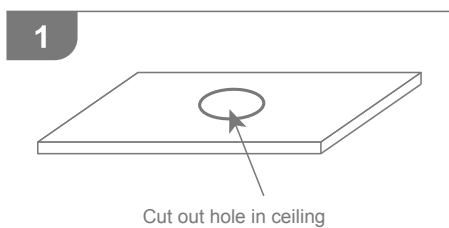


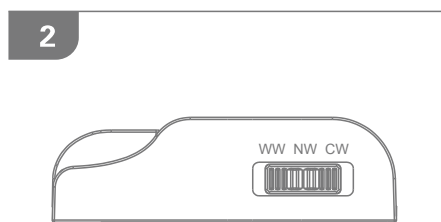
### Swap 8 Deep

#### Specifications

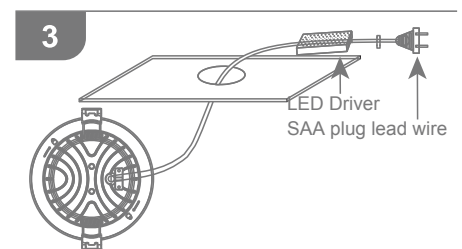
|            |         |              |  |                 |            |
|------------|---------|--------------|--|-----------------|------------|
| Voltage:   | 240V AC | Lumen (±5%): | Warm White 3000K - 800lm<br>Neutral White 4000K - 900lm<br>White 5700K - 850lm | Dimmable:       | Yes        |
| Power:     | 8W      | Beam Angle:  | 60°  | Operating Temp: | -20 ~ 45°C |
| IP Rating: | IP44    | CCT:         | 3000K - 4000K - 5700K  | Power Factor:   | 0.9        |
| CRI:       | ≥80     | Lifespan:    | 35,000hrs  |                 |            |



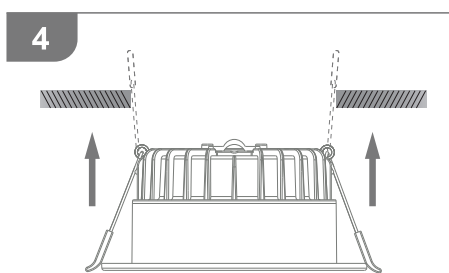
Cut out a hole in the ceiling. Ensure there is sufficient clearance in the area where you will be positioning the fitting.



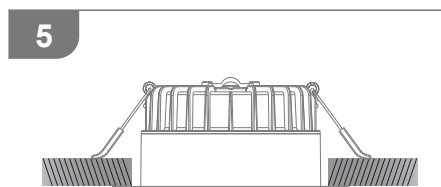
Choose the preferred colour temperature via the switch on the controller.



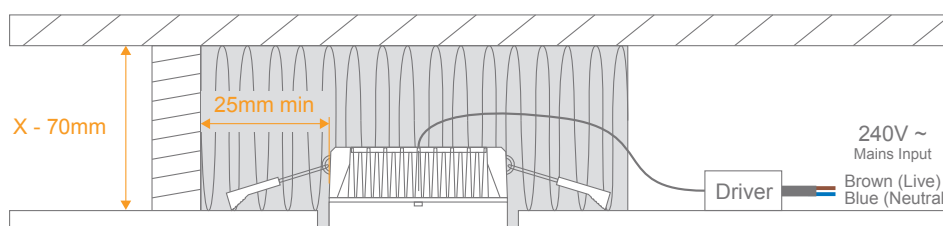
Connect the fitting to the mains via the power plug.



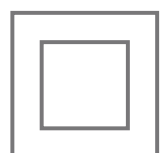
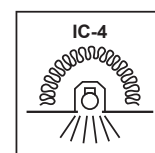
Fit the fixture in the ceiling by lifting the spring clips upwards.



Once in place the spring clips should be against the top of the ceiling and support the fitting.



**Note:** The LED driver is NOT suitable for covering with insulation material.



**Note:** -The lamp must be installed by professional electrician  
-Ensure the power supply is switched off before fitting this product

-Do not touch the lamp when in use  
-Keep away from hot steam and corrosive gas